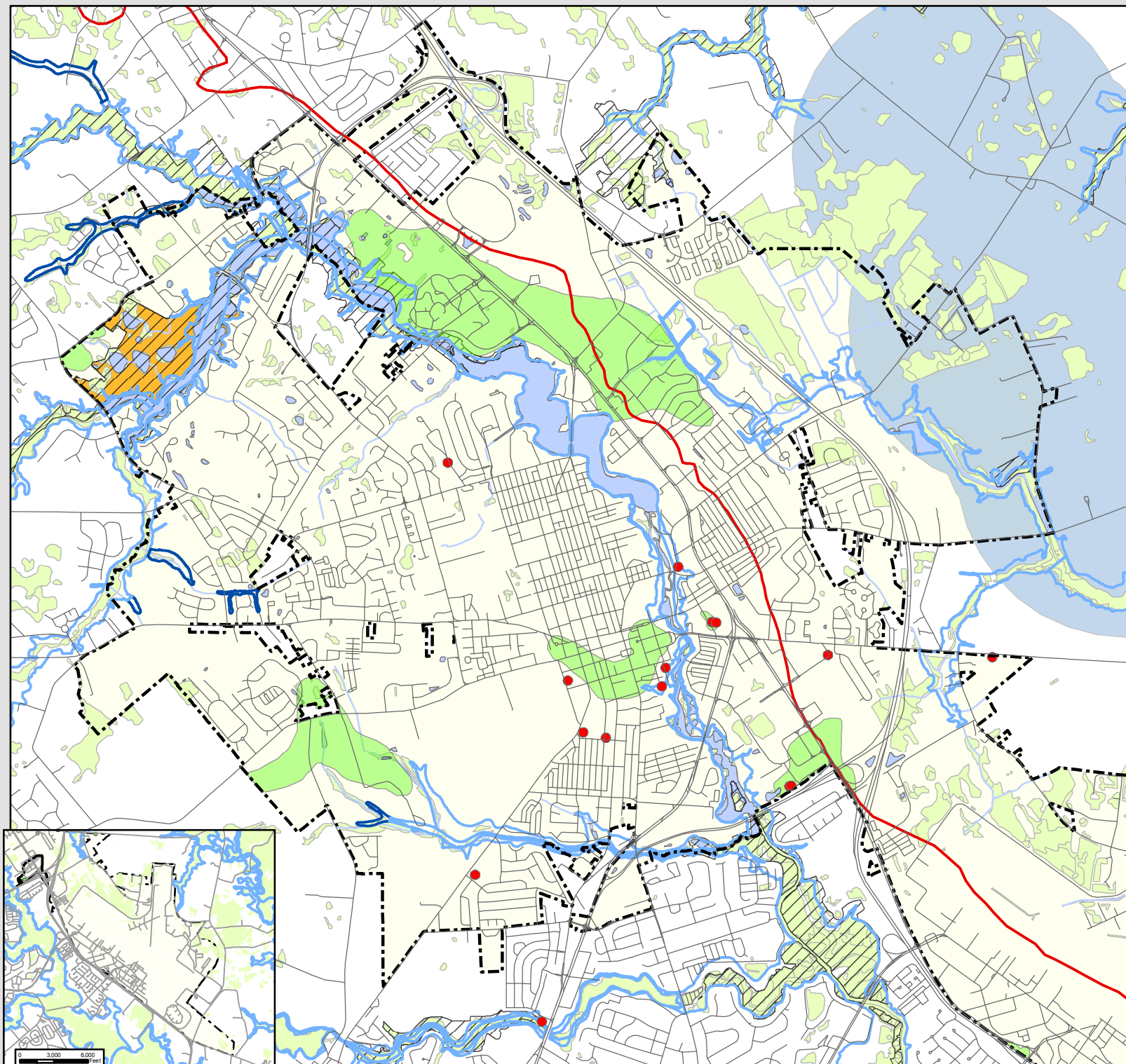


City of Dover, Delaware

Map 5-1:
Natural Features



- Roads
- ⬡ Municipal Boundaries
- ~ Hydrology
- ⬢ Lakes, Ponds, & Rivers
- ⬢ St. Jones Watershed
- Flood Plains**
 - ⬢ A
 - ⬢ AE
- Confined Wells
- ⬢ Excellent Recharge Areas
- ⬢ Wellhead Protection Area
- ⬢ Natural Areas
- ⬢ State-wide Wetlands
- ⬢ Nature Preserve



As Adopted On
February 9, 2009

0 3,000 6,000
Feet

Paper Map DISCLAIMER:

By acceptance of this map material, you agree to the following:

This map material is made available by the City of Dover, Delaware as a public service. The material is for reference purposes only, and the City makes no warranty, representation, or guaranty as to the accuracy of the material. You release the City, its agents, servants, and employees, from any and all liability related to the material, including its accuracy, availability, use, and misuse. In no event shall the City be liable for any direct or indirect damages suffered related to the use of this data including, but not limited to, physical injury, death, property damage, economic loss, or other consequential damages suffered by the Recipient or others arising from any inadequacies of the digital data or the Recipient's use of this data.

The material is in the public domain and may be copied without permission. Citation to the source would be appreciated.

Any errors or omissions in the material should be reported to the City of Dover, Delaware's Public Services GIS Department.



Date Printed: March 13, 2009
Date Created: May 28, 2008
File: m:\gis_data\projects\tech_mxds\comp plan maps\natural features
Department: Public Services GIS
City of Dover, Delaware